



Co-funded by
the European Union



I.MAM
VIRTUAL



Co-funded by
the European Union



LESSON 1

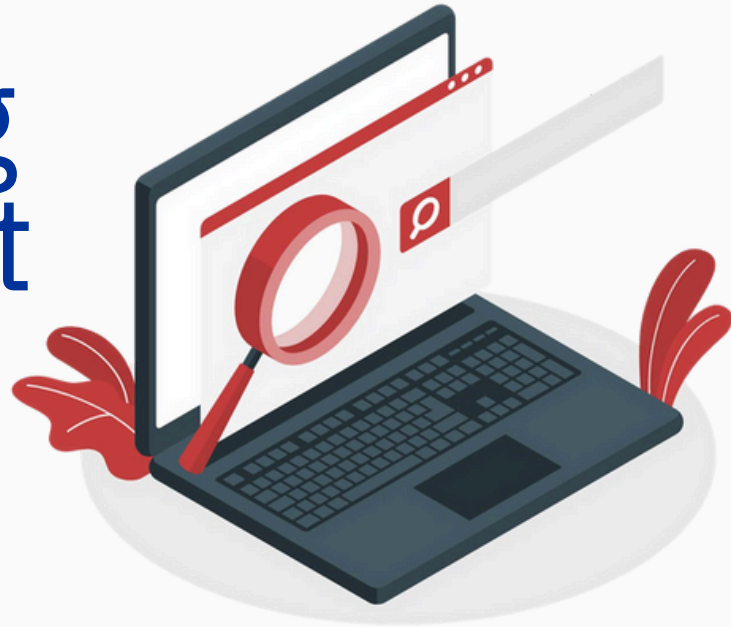
SEARCHING ON WEB

I.MAM VIRTUAL – 101083431 Programme(s): Erasmus+
(ERASMUS+) Topic(s): ERASMUS-EDU-2021-VIRT-EXCH-NDICI
Type of action: ERASMUS Project Grants ERASMUS-EDU-2021-
VIRT-EXCH- Virtual Exchanges



Co-funded by
the European Union

Surfing the Net





Internet vs. Web

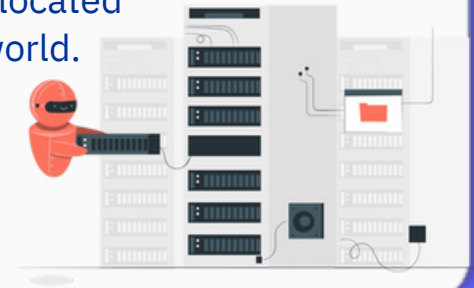
Internet

The infrastructure that enables the transmission of data between different devices.



Web

The set of site pages, the contents of which are enclosed in special containers (so-called servers) that can be located anywhere in the world.





Co-funded by
the European Union

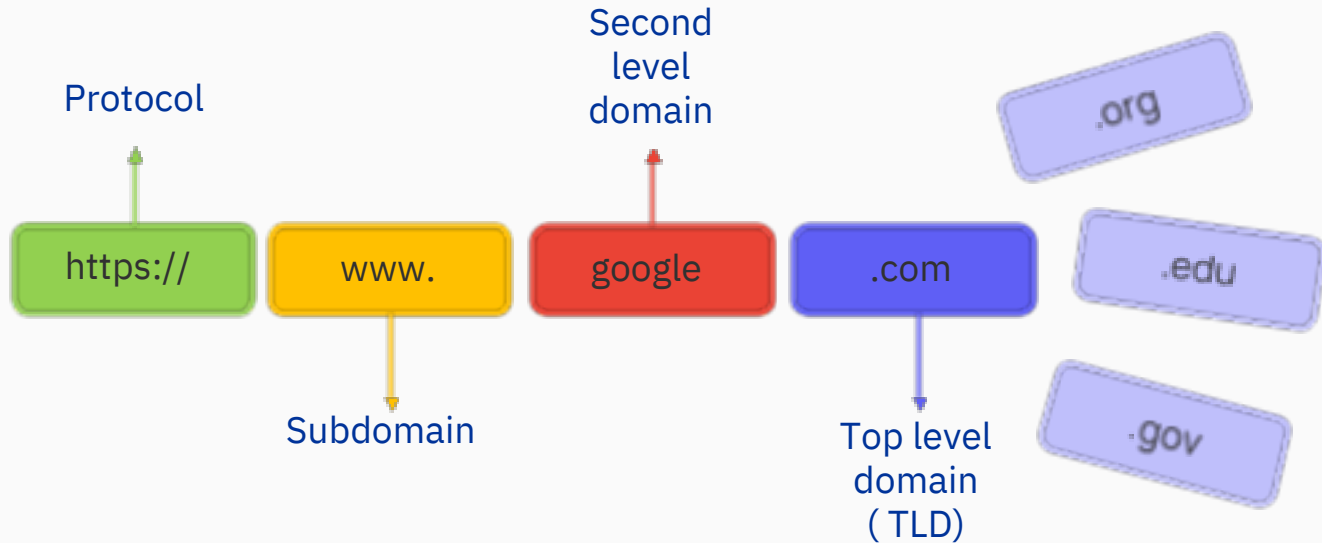
What is a browser?

A browser has the function is to display the web pages of the visited sites and allow all the operations of interaction with them.





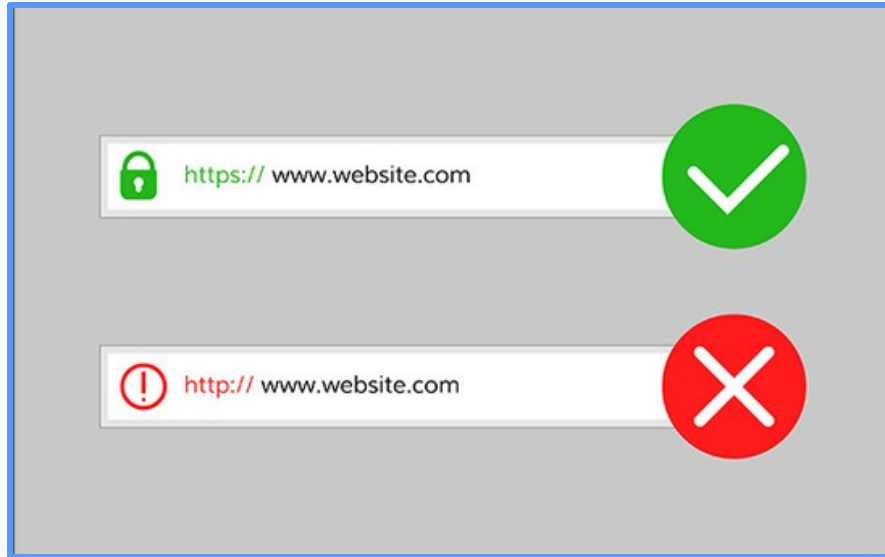
The URL (Uniform Resource Locator)





Co-funded by
the European Union

How to spot if a website is safe



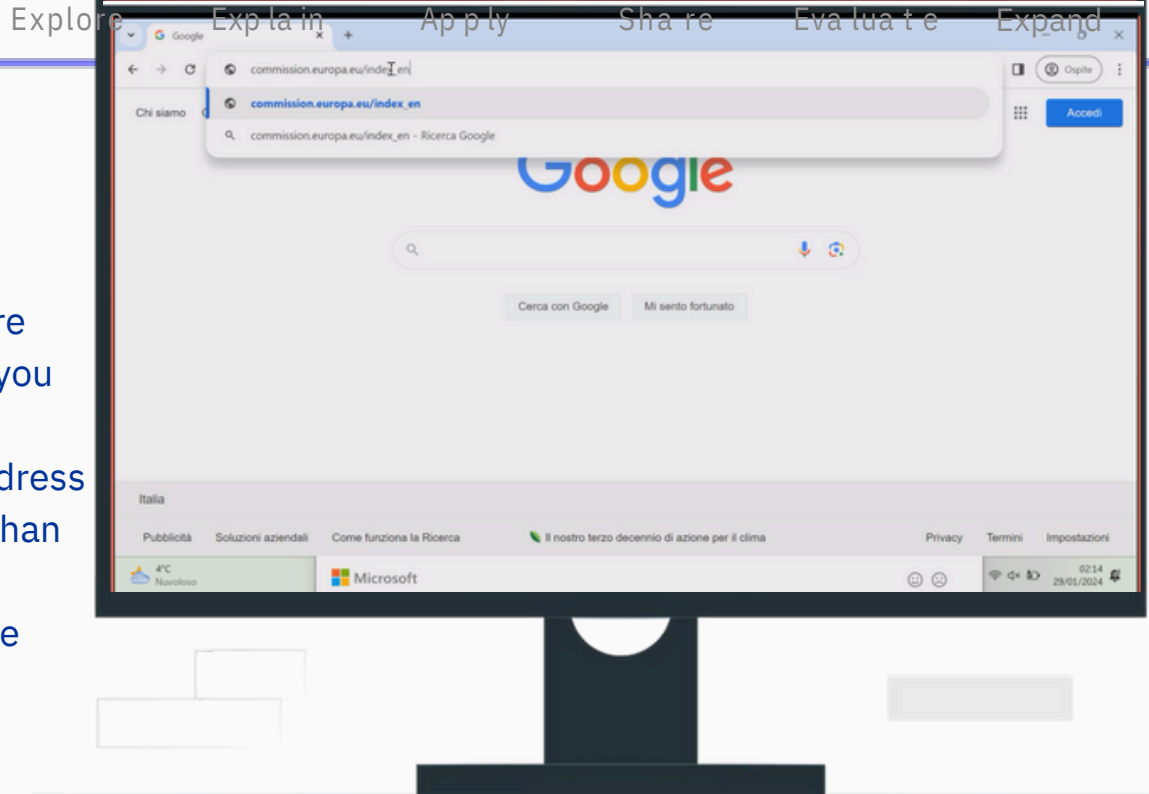


Co-funded by
the European Union

Entering a URL in the address bar

When you open the browser, you are ready to surf the Web. This means you can move to other web pages by entering the relevant URL in the address bar. To reach a different web page than the initial one, proceed as follows:

1. Type the address of the web page you intend to view in the browser window,
2. Press the Enter button on your keyboard to display the web page.





Co-funded by
the European Union

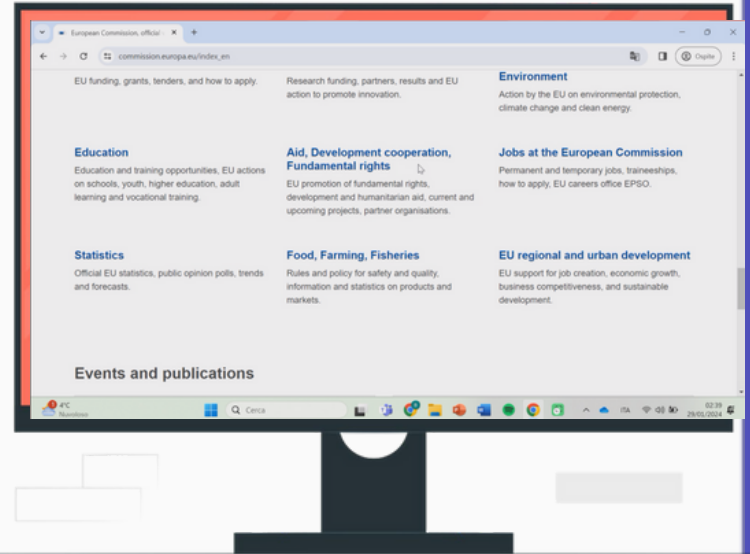
Moving through web pages

The Back and Forward buttons located at the top left of the browser window are very useful for browsing. In fact, they allow you to move between the many web pages you visit.

If the web page you are on is no longer of interest to you, you can return to the previous one by clicking on the Back button.

Clicking the forward button, on the other hand, will take you to the next web page from which you moved previously.

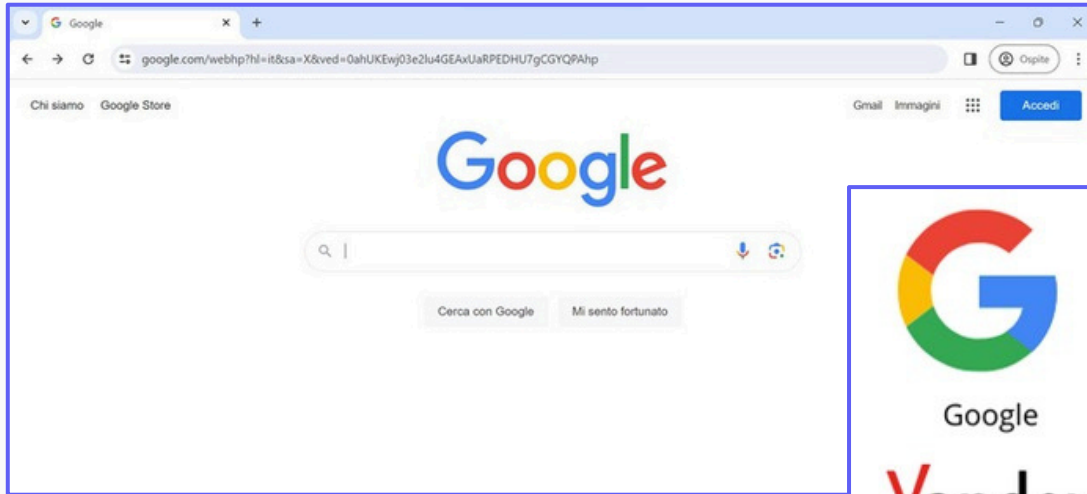
Very often web pages are constantly being updated, so to enjoy the most recent content, it is advisable that you reload the web page you visited. In fact, all browsers have a button through which to do this, marked by a circular arrow.





Co-funded by
the European Union

Search Engines





Co-funded by
the European Union

Explore

Explain

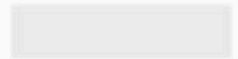
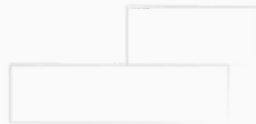
Apply

Share

Evaluate

Expand

Performing
an
information
search





Co-funded by
the European Union

Explore

Explain

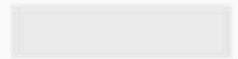
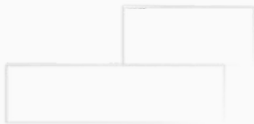
Apply

Share

Evaluate

Expand

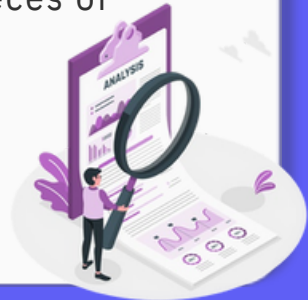
Performing
an image
search





How to evaluate the results of a Web search?

- ✓ Check that the name(s) of the writer(s) or editor(s) of the site on which we are browsing is indicated.
- ✓ Check the date of the last update.
- ✓ Check the eventual presence of appropriate and correct bibliographical references.
- ✓ Check the care with which the texts are written (absence of spelling errors) or the graphic order in which the pages containing them are organized.
- ✓ Check the provenance of the materials by carefully reading the address (URL) of the site.
- ✓ Follow the authoritativeness of sources, especially for the more articulate pieces of information.





Co-funded by
the European Union

THANK YOU!



“Funded by the European Union. Views and opinions expressed are however those of the author(s) only and do not necessarily reflect those of the European Union or the European Education and Culture Executive Agency (EACEA). Neither the European Union nor EACEA can be held responsible for them.”